

## The right solution for converting XML OBD snapshot files to Excel

Runs on 32 bit / 64 bit Windows



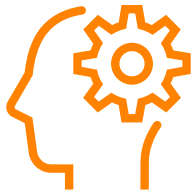
### SUPPORTED

#### Standards

- ISO 9141-2
- ISO 14230-4
- SAE J1850
- ISO 15765-4
- SAE J1979
- SAE J1939
- ISO 27145
- SAE J1979-2
- SAE J169-Compliance Test

### Key Features

- Convert any XML snapshot file created with DiagRA® D or Silver Scan-Tool™ to Excel
- Convert single or multiple XML snapshot files
- Create a new Excel file or append additional data to an existing file
- Various options are available for formatting the Excel file
- Colored display of test results (passed, incomplete and failed)
- Selectable order for conversion of OBD data
- Selection of ECUs for conversion
- Support of multiple languages
- Ability to convert XML files of any protocol into the same Excel file (e.g. J1979 and J1699)



## THE RIGHT TIME TO DISPLAY YOUR DIAGNOSTIC DATA IN EXCEL

The data conversion automatically detects the respective data type in the source files and correctly assigns data of the same type. (E.g. vehicle speed) This allows you to perform various mathematical operations on the data or create a chart.

General data contained in the XML is imported into Excel:

- Version of DiagRA® D / Silver Scan-Tool™
- Version of XmlToExcel that was used for the conversion
- Date and time of XML file creation
- VCI type, author, VIN, diagnostic protocol,...

## THE RIGHT TOOL TO SUPPORT THE OBD DATA ANALYSIS

When you convert multiple XML files, all the same data types are mapped correctly.

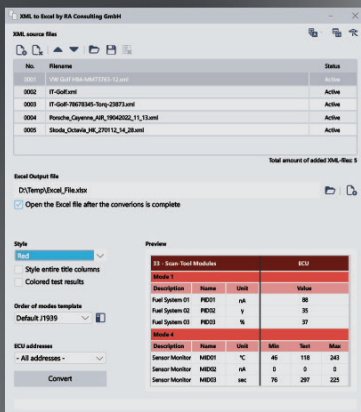
Example cases:

- Five XML files were converted
- Let's focus on the vehicle speed sensor

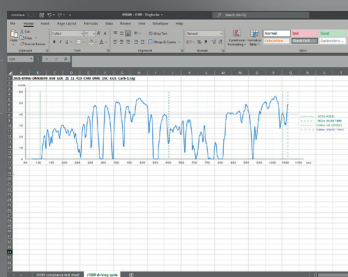
All five values of the vehicle speed sensor are in the same row, i.e. row 100.

You can then import two more XML files into the same Excel file. Again, the vehicle speed sensor values are written to row 100.

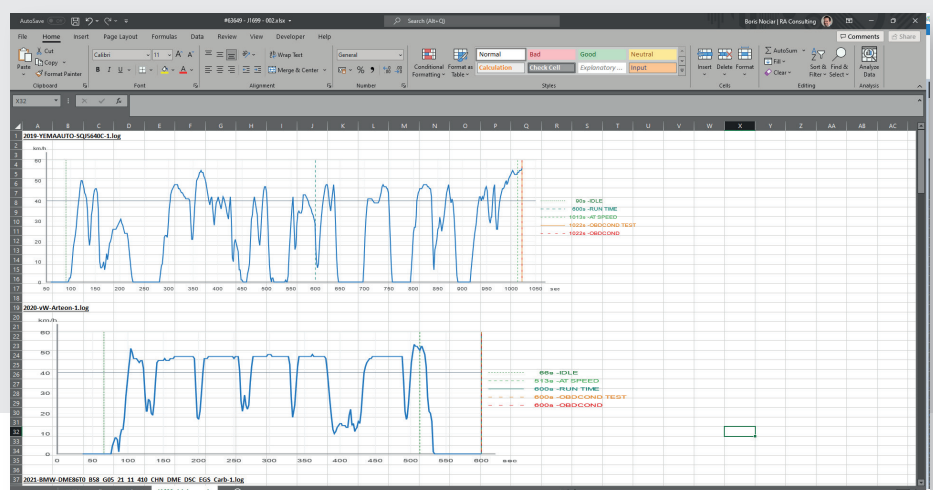
With this great feature, you get a very clear analysis of the OBD data.



User interface XMLToExcel



Example for a „Single Conversion“



Example for „Multiple Conversion“



RA CONSULTING

RA Consulting GmbH · Zeiloch 6a · 76646 Bruchsal · Germany  
Tel. +49 7251 9819-500 · info@rac.de

automotive electronics  
testing alliance

www.rac.de